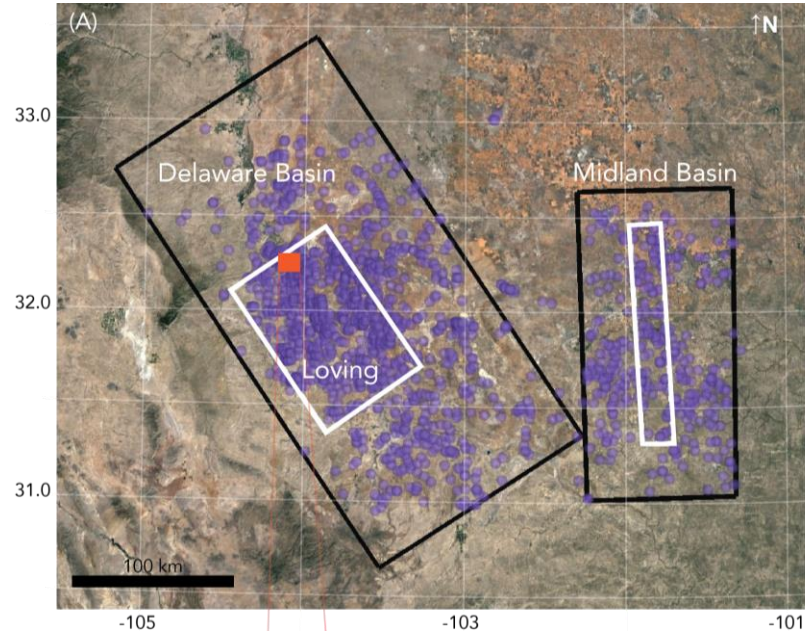


# Transient methane emissions in the Permian Basin

Daniel H. Cusworth<sup>1</sup>, Riley M. Duren<sup>2,1</sup>, Andrew K. Thorpe<sup>1</sup>, Winston Olson-Duvall<sup>1</sup>, Joseph Heckler<sup>3</sup>, John W. Chapman<sup>1</sup>, Michael L. Eastwood<sup>1</sup>, Mark C. Helmlinger<sup>1</sup>, Robert O. Green<sup>1</sup>, Gregory P. Asner<sup>3</sup>, Philip E. Dennison<sup>4</sup>, and Charles E. Miller<sup>1</sup>

Observing domain



- Sep-Nov 2019: 3000+ plumes identified from 1600+ sources using AVIRIS-NG and GAO imaging spectrometers
- 29% of detected emissions came from 11% of detected infrastructure
- 50%/38%/12% split between production/gathering and boosting/processing – suggest shift in midstream
- Active/inactive flares responsible for 12% of detected emissions

Example plumes from imaging spectrometers

