



# InSight

## Science Team Meeting

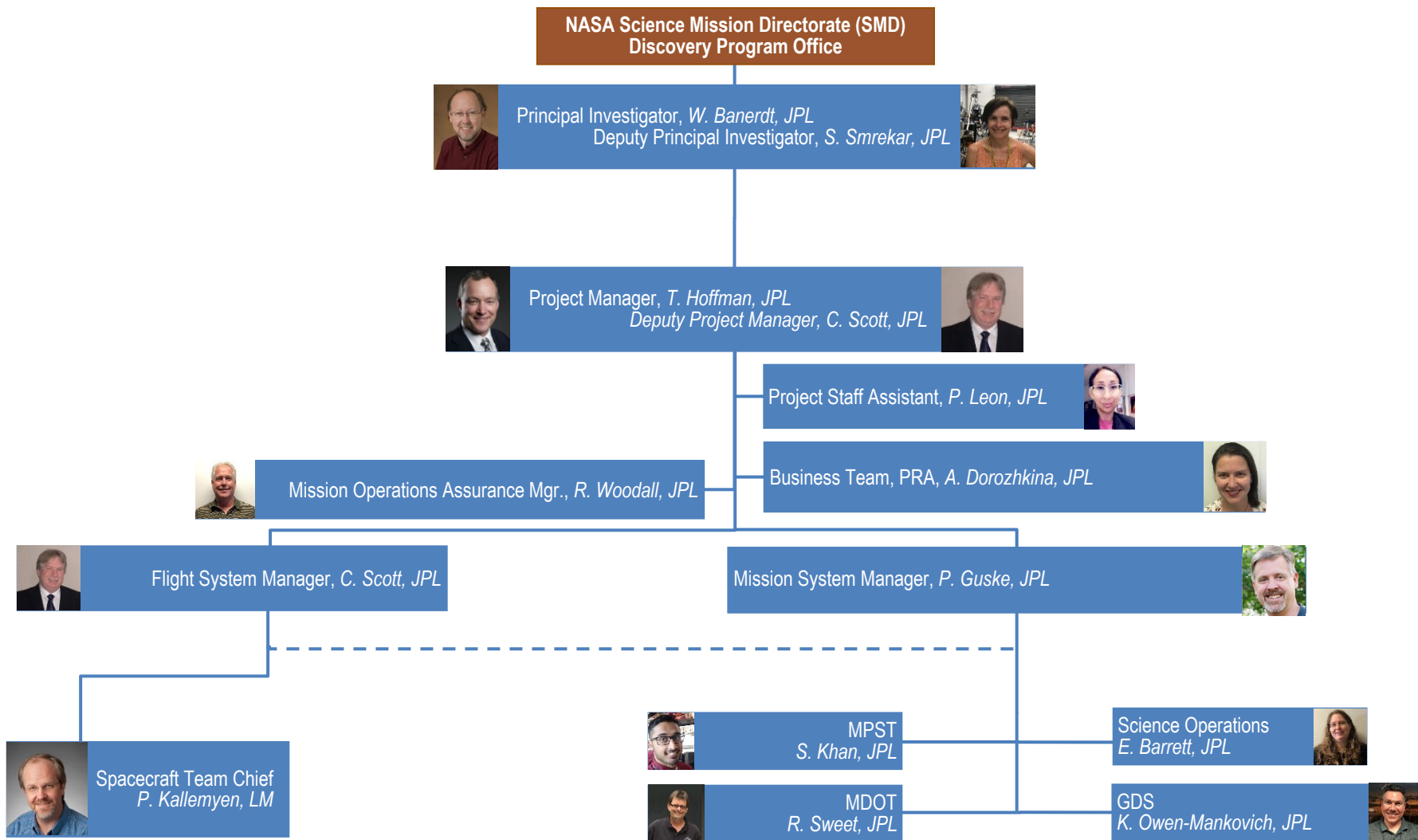


### Project Overview

Tom Hoffman, InSight Project Manager  
Jet Propulsion Laboratory, California Institute of Technology  
© 2019 California Institute of Technology. Government sponsorship acknowledged

October 21, 2019





- Overall Status
  - Spacecraft and Instruments performing well
    - Had some unexpected excitement during conjunction
  - Actively working to resolve the HP<sup>3</sup> penetration anomaly
- Currently in Weekly Planning cycles (Science Monitoring)
  - Working an additional tactical shift each week to HP<sup>3</sup> support through ~mid-November
  - May have bursts of activity related to HP<sup>3</sup> penetration anomaly or after November
- Upcoming Activities
  - Continuing transition to lower staffing levels for Science Monitoring support
  - Will try to perform remaining Science Activity Requests
  - Will start working extended mission proposal with NASA

- Anomaly Status
  - Payload Data Base Look-up Table (DBLT)
    - Software fix to be implemented no earlier than December
  - HP<sup>3</sup> penetration anomaly
    - Currently actively working this problem
  - HP<sup>3</sup> BEE Anomaly
    - Almost closed, operational fix in place
    - Remaining analysis actions needed before end of November
  - USM Anomaly
    - Still under investigation, most probable cause is EMC
    - Operational fixes in place sufficient for the near term
    - Longer term solution in discussion

- For Best Original Interactive Programming for the Landing show



- Spacecraft is healthy
- SEIS and APSS Instruments are collecting Daily Science
- Team is actively working HP<sup>3</sup> Penetration Anomaly
- Transitioned the team and processes to weekly planning
- Looking forward to even more great science!